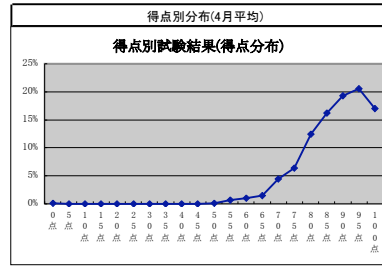
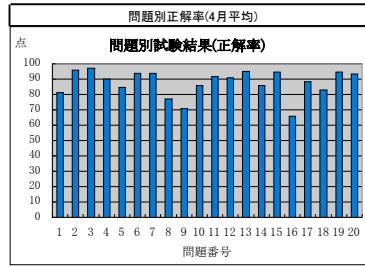


監理技術者講習の修了試験結果状況(平成21年4月分)



監理技術者講習の修了試験結果(問題別正解率)

実施日	地区	試験問題番号(H20.09版)																				平均
		1	2	3	4	5	6	7	8	9	10	11	12	13	14	15	16	17	18	19	20	
H21.4.8	青森	72	96	93	91	81	96	86	67	67	84	97	91	94	79	96	53	80	73	94	97	84.4
H21.4.8	山形	82	98	97	92	79	98	88	75	60	93	94	94	96	86	95	58	87	70	91	92	86.3
H21.4.8	東京	76	96	96	93	88	91	94	77	66	90	90	91	93	80	95	64	89	82	95	91	86.9
H21.4.8	名古屋	78	98	94	93	78	91	92	73	62	77	97	96	98	92	96	53	88	77	95	96	86.2
H21.4.8	大阪	72	95	96	95	81	98	94	77	66	83	96	93	95	76	95	78	87	83	95	96	87.6
H21.4.8	岡山	81	98	95	90	79	95	84	83	45	76	86	88	98	83	95	52	91	79	90	97	84.3
H21.4.9	さいたま	82	97	98	86	82	94	96	85	60	88	97	94	92	86	96	54	84	79	97	92	87.0
H21.4.9	千葉	79	97	96	92	87	73	89	79	66	84	91	91	88	78	98	62	87	71	96	97	84.6
H21.4.9	小平	85	96	97	92	86	95	93	74	66	95	95	93	96	84	89	85	86	80	99	96	89.1
H21.4.9	横浜	83	95	99	94	84	95	97	76	85	92	96	94	94	90	94	76	89	91	96	90	90.5
H21.4.10	札幌	86	98	99	93	86	98	89	75	76	93	98	95	97	92	96	61	84	93	97	95	90.6
H21.4.10	仙台	85	100	100	93	89	91	97	82	56	96	100	92	100	91	97	57	85	84	95	93	89.2
H21.4.10	福島	93	97	96	99	90	97	94	86	83	86	99	89	100	89	100	62	85	90	97	97	91.5
H21.4.10	水戸	80	94	97	88	91	92	87	73	56	76	87	85	93	80	87	49	83	76	92	88	82.7
H21.4.10	東京	77	98	99	89	88	96	96	80	71	86	91	90	91	86	96	63	89	84	91	96	87.9
H21.4.10	長野	76	95	99	86	81	93	96	72	55	97	94	90	95	80	96	52	86	87	92	94	85.5
H21.4.10	三島	81	95	98	90	68	87	93	79	66	83	93	89	98	84	96	55	87	74	93	93	85.1
H21.4.10	津	70	98	96	80	79	89	84	73	56	91	94	84	88	82	87	64	87	75	94	95	83.3
H21.4.10	京都	94	98	100	96	83	89	100	81	74	91	98	98	100	100	98	72	89	85	96	96	91.9
H21.4.10	広島	83	99	95	86	83	93	85	83	88	90	96	96	90	79	97	56	80	74	95	94	85.6
H21.4.10	鹿児島	62	97	93	93	86	83	59	76	66	90	90	76	86	66	97	38	83	90	100	86	80.9
H21.4.14	札幌	87	96	98	92	81	93	92	83	82	96	93	93	96	91	97	87	98	82	97	97	91.6
H21.4.14	東京	76	97	98	82	74	98	96	80	62	95	96	90	94	95	97	61	87	75	91	92	86.8
H21.4.14	横浜	89	98	99	91	83	97	98	82	83	95	93	94	96	93	96	58	92	82	94	93	90.3
H21.4.14	名古屋	84	98	99	92	79	92	88	83	71	71	95	89	90	81	95	55	83	79	95	95	85.7
H21.4.14	大阪	77	93	99	92	93	95	96	77	77	92	99	96	97	76	97	69	91	79	91	97	89.2
H21.4.14	高松	79	98	98	88	89	95	93	79	77	82	100	88	93	80	98	64	82	86	95	93	87.9
H21.4.15	札幌	92	92	96	90	82	96	100	60	84	96	98	90	94	96	100	64	88	78	88	98	89.1
H21.4.15	八戸	79	95	89	90	82	94	93	70	63	91	97	81	96	90	95	43	85	80	91	90	84.7
H21.4.15	秋田	78	95	95	83	82	97	92	75	64	93	86	93	95	94	95	58	84	86	92	93	86.5
H21.4.15	千葉	78	94	98	92	84	94	94	73	61	77	97	88	97	89	95	61	88	77	95	98	86.5
H21.4.15	東京	95	97	96	95	85	100	95	88	78	97	100	99	100	97	100	71	90	77	99	97	92.8
H21.4.15	福井	62	98	98	82	74	95	81	75	60	86	86	89	85	74	94	45	91	76	90	89	81.5
H21.4.15	神戸	86	99	97	92	89	97	98	75	81	89	98	96	94	81	96	73	97	94	97	96	91.3
H21.4.15	熊本	85	93	100	87	67	74	87	78	48	89	89	100	91	61	96	46	85	67	91	93	81.4
H21.4.16	柏	79	98	94	86	77	92	87	79	67	89	88	89	93	87	96	50	87	88	95	90	85.6
H21.4.16	金沢	90	97	97	87	85	97	92	70	61	92	98	99	96	94	96	69	91	94	96	95	89.8
H21.4.16	名古屋	73	97	99	88	88	86	87	75	59	77	92	95	96	95	96	70	91	89	96	94	87.1
H21.4.17	札幌	84	97	96	90	83	97	94	73	78	97	97	96	99	91	98	59	85	83	91	91	89.0
H21.4.17	盛岡	80	97	96	86	83	93	88	71	66	85	89	86	92	88	93	60	82	81	91	92	85.0
H21.4.17	東京	79	96	98	92	84	93	88	78	71	82	91	89	93	81	92	55	85	79	90	93	85.5
H21.4.17	柏根原	72	91	96	91	83	91	86	89	68	72	86	82	86	71	90	43	91	82	89	90	81.5
H21.4.17	長岡	70	97	95	90	85	84	83	75	59	80	85	87	83	79	94	45	81	67	84	88	80.6
H21.4.17	岐阜	72	96	99	89	78	91	89	73	63	87	91	90	94	91	99	70	94	93	99	99	87.9
H21.4.17	浜松	73	99	97	87	74	93	83	81	65	79	92	95	95	96	94	54	80	81	90	93	85.1
H21.4.17	福岡	72	95	97	90	82	93	95	81	56	90	89	88	89	86	96	55	93	80	97	91	85.8
H21.4.21	旭川	90	92	95	96	95	98	96	83	82	100	97	96	96	99	97	83	96	84	99	98	94.6
H21.4.21	さいたま	76	97	99	84	88	96	83	80	65	91	94	90	98	75	97	68	94	86	95	97	87.7
H21.4.21	市川	75	94	97	92	83	96	94	71	58	77	88	87	93	81	91	59	95	87	100	99	85.9
H21.4.21	東京	88	97	97	89	86	93	97	82	76	86	91	89	98	87	97	58	83	77	90	90	87.6
H21.4.22	仙台	78	98	95	90	87	95	94	83	72	91	81	89	96	82	93	55	89	80	89	90	86.4
H21.4.22	郡山	67	97	97	92	86	92	93	71	57	63	83	84	100	84	96	72	92	87	97	95	85.3
H21.4.22	宇都宮	77	98	100	95	87	92	94	85	73	96	93	94	95	89	95	69	94	91	97	98	90.6
H21.4.22	前橋	73	95	93	88	84	92	91	71	64	86	90	87	92	78	91	54	83	81	86	85	83.2
H21.4.22	東京	88	98	98	94	85	96	90	87	82	89	94	96	95	90	96	61	89	88	95	95	90.3
H21.4.22	大阪	87	96	99	96	89	99	97	77	87	93	96	97	99	96	99	90	86	89	99	96	93.4
H21.4.22	長崎	86	93	100	76	79	86	93	76	76	83	100	86	100	86	90	59	90	83	97	76	85.8
H21.4.22	帯広	76	97	98	91	77	93	92	63	68	82	96	91	95	83	95	64	88	86	91	92	85.4
H21.4.23	さいたま	89	93	97	91	89	93	95	80	87	95	98	89	98	94	98	61	79	80	91	98	89.8
H21.4.23	千葉	88	96	95	92	80	93	95	82	74	82	91	95	97	82	97	65	86	76	97	93	87.8
H21.4.23	東京	83	97	97	94	80	97	94	68	68	92	89	94	97	87	88	85	97	93	99	98	90.4
H21.4.23	横浜	64	98	96	96	81	98	96	85	68	85	99	96	93	88	96	60	87	80	95	94	88.8
H21.4.23	富山	81	97	96	89	88	96	95	76	70	92	95	94	95	9							

監理技術者講習の修了試験結果(得点別分布)

実施日	地区	得点(点)																											
		0点	5点	10点	15点	20点	25点	30点	35点	40点	45点	50点	55点	60点	65点	70点	75点	80点	85点	90点	95点	100点							
H21.4.8	青森													0.9%	2.6%	1.7%	6.9%	11.2%	15.5%	19.8%	19.0%	15.5%	6.9%						
H21.4.8	山形								0.7%						0.7%	2.0%	4.0%	5.4%	4.0%	12.1%	17.4%	22.8%	18.1%	12.8%					
H21.4.8	東京													0.6%	0.6%	0.6%	3.7%	4.3%	6.7%	11.0%	18.9%	18.3%	23.8%	11.6%					
H21.4.8	名古屋														0.8%	0.4%	2.4%	4.0%	9.5%	16.2%	19.4%	17.8%	20.6%	9.1%					
H21.4.8	大阪															0.9%	4.6%	10.1%	11.0%	17.4%	19.3%	24.8%	11.9%						
H21.4.8	岡山															1.7%	5.2%	5.2%	17.2%	13.8%	13.8%	15.5%	20.7%	6.9%					
H21.4.9	さいたま															0.6%	0.6%	1.3%	5.2%	5.2%	18.2%	18.2%	20.1%	18.2%	12.3%				
H21.4.9	千葉															0.8%	2.3%	3.1%	8.5%	13.2%	11.6%	14.7%	16.3%	21.7%	7.8%				
H21.4.9	小平															1.4%	2.7%	1.4%	2.7%	2.7%	9.5%	16.2%	18.9%	20.3%	24.3%				
H21.4.9	横浜													0.9%	0.9%	1.4%	2.3%	5.5%	6.9%	9.2%	20.6%	24.3%	28.0%						
H21.4.10	札幌														0.5%	0.5%	0.9%	1.4%	3.7%	6.5%	15.9%	21.0%	25.2%	23.8%					
H21.4.10	仙台																2.8%	5.2%	5.2%	6.6%	14.7%	22.7%	21.8%	20.9%					
H21.4.10	福島																1.4%		7.0%	16.9%	25.4%	33.8%	15.5%						
H21.4.10	水戸	0.7%													1.4%	2.7%	3.4%	4.6%	8.8%	20.4%	19.7%	20.4%	11.6%	5.4%					
H21.4.10	東京									1.0%						1.0%	2.1%	5.2%	5.2%	11.5%	17.7%	13.5%	25.0%	17.7%					
H21.4.10	長野														0.7%	2.1%	6.3%	3.5%	5.6%	11.2%	18.2%	24.5%	15.4%	11.9%					
H21.4.10	三島															0.9%		1.9%	2.8%	7.5%	5.6%	18.7%	10.3%	25.2%	22.4%	4.7%			
H21.4.10	津														0.7%	4.2%	5.6%	2.8%	9.9%	12.0%	25.4%	19.7%	13.4%	5.8%					
H21.4.10	京都															2.1%	2.1%	2.1%	4.3%	17.0%	17.0%	21.3%	34.0%						
H21.4.10	広島															1.0%	3.1%	3.1%	3.1%	8.3%	12.5%	12.5%	18.8%	20.8%	14.6%				
H21.4.10	鹿児島															6.9%	3.4%	3.4%	20.7%	20.7%	13.8%	3.4%	6.9%						
H21.4.14	札幌															1.6%	0.6%	1.6%	0.8%	3.2%	7.2%	8.8%	13.6%	33.6%	28.8%				
H21.4.14	東京															0.5%	2.0%	1.5%	3.5%	2.0%	6.6%	11.6%	17.2%	18.2%	21.2%	15.7%			
H21.4.14	横浜															0.6%	3.1%	3.7%	12.4%	13.7%	21.7%	20.5%	24.2%						
H21.4.14	名古屋															1.1%	1.1%	1.6%	4.4%	8.8%	19.2%	15.9%	22.0%	17.0%	8.8%				
H21.4.14	大阪															1.3%	2.7%	2.7%	2.7%	12.0%	13.3%	25.3%	17.3%	22.7%					
H21.4.14	高松																1.8%	3.6%	3.6%	17.9%	16.1%	25.0%	23.2%	8.9%					
H21.4.15	札幌																	4.0%	4.0%	22.0%	12.0%	14.0%	22.0%	22.0%					
H21.4.15	八戸															1.7%	1.7%	5.1%	5.1%	8.5%	12.8%	17.9%	17.9%	22.2%	6.8%				
H21.4.15	秋田															0.6%		1.2%	2.4%	6.7%	5.5%	11.5%	18.8%	24.8%	17.0%	11.5%			
H21.4.15	千葉																3.1%	4.7%	4.7%	7.8%	6.3%	20.3%	18.8%	21.9%	12.5%				
H21.4.15	東京																4.1%	1.4%	4.1%	12.3%	16.4%	27.4%	34.2%						
H21.4.15	福井																1.5%	4.5%	14.4%	18.9%	13.6%	13.6%	19.7%	9.1%	4.5%				
H21.4.15	神戸																1.0%	2.1%	5.2%	11.3%	10.3%	12.4%	29.9%	27.8%					
H21.4.15	熊本																4.3%	2.2%	4.3%	13.0%	8.7%	15.2%	21.7%	10.9%	15.2%	4.3%			
H21.4.16	柏																0.8%	0.8%	4.0%	6.3%	7.9%	11.1%	16.7%	21.4%	20.6%	9.5%			
H21.4.16	金沢																2.0%	1.4%	5.4%	7.5%	18.4%	18.4%	29.3%	17.0%					
H21.4.16	名古屋																	1.2%	0.6%	4.7%	8.2%	15.2%	15.2%	21.6%	25.7%	7.6%			
H21.4.17	札幌																0.9%	2.6%	3.4%	7.8%	9.5%	15.5%	13.6%	24.1%	22.4%				
H21.4.17	盛岡																1.3%	1.3%	3.3%	5.9%	9.9%	9.2%	17.8%	27.0%	18.4%	5.3%			
H21.4.17	東京																0.6%	1.2%	0.6%	1.8%	1.2%	2.4%	15.3%	10.0%	17.1%	20.6%	21.2%	8.2%	
H21.4.17	相模原																1.1%	1.1%	2.2%	5.6%	5.6%	13.3%	14.4%	16.7%	18.9%	17.8%	1.1%		
H21.4.17	長岡																0.6%	1.2%	3.6%	1.8%	3.0%	11.5%	12.7%	23.0%	13.9%	12.7%	10.9%	4.8%	
H21.4.17	岐阜																	0.5%	1.0%	4.5%	8.4%	11.4%	18.8%	21.3%	23.8%	10.4%			
H21.4.17	浜松																0.7%	1.4%	1.4%	4.3%	7.8%	4.3%	10.6%	22.0%	22.0%	16.3%	9.2%		
H21.4.17	福岡																1.0%	2.9%	3.8%	6.7%	6.7%	7.7%	21.2%	18.3%	19.2%	12.5%			
H21.4.21	旭川																	0.7%	0.7%	3.7%	2.2%	8.1%	10.4%	25.9%	48.1%				
H21.4.21	さいたま																	0.7%	2.9%	6.5%	10.1%	5.8%	13.7%	22.3%	23.7%	14.4%			
H21.4.21	市川																	1.1%	2.1%	3.2%	4.2%	6.3%	12.6%	23.2%	21.1%	17.9%	8.4%		
H21.4.21	東京																	0.9%	0.9%	5.2%	8.7%	16.5%	13.9%	20.0%	13.9%	20.0%			
H21.4.22	仙台	0.6%																0.6%	1.2%	2.4%	4.8%	10.8%	11.4%	12.7%	20.5%	21.7%	13.3%		
H21.4.22	郡山																	1.3%	1.3%	6.6%	5.3%	25.0%	13.2%	27.6%	13.2%	6.6%			
H21.4.22	宇都宮																	2.4%	4.8%	10.8%	15.1%	14.5%	31.3%	21.1%					
H21.4.22	前橋																	0.5%		0.5%	0.5%	1.5%	2.6%	4.1%	6.2%	9.3%	16.5%	17.0%	6.2%
H21.4.22	東京																		7.1%	2.4%	3.6%	14.3%	20.2%	28.6%	22.6%				
H21.4.22	大阪																		2.9%	1.4%	1.4%	8.6%	25.7%	30.0%	30.0%				
H21.4.22	長崎																	3.4%		3.4%	10.3%	10.3%	27.6%	17.2%	24.1%	3.4%			
H21.4.23	帯広																	0.8%	2.4%	2.4%	0.8%	3.9%	7.1%	15.0%	18.1%	18.9%	13.4%	16.5%	
H21.4.23	さいたま																		0.6%	1.2%	4.1%	5.9%	5.9%	16.6%	21.3%	19.5%	24.9%		
H21.4.23	千葉																		0.7%	2.1%	1.4%	4.1%	6.2%	10.3%	18.5%	19.2%	20.5%	17.1%	
H21.4.23	東京																		1.4%	2.0%	6.1%	7.4%	16.9%	20.3%	20.3%	25.7%			
H21.4.23	横浜																		0.5%		0.5%	1.5%	2.0%	6.6%	10.7%	16.8%	18.8%	26.4%	16.2%
H21.4.23	富山																		0.5%	1.1%	0.5%	4.3%	7.4%	9.0%	15.4%	17.0%	21.3%	23.4%	
H21.4.23	名古屋																		0.9%	2.3%	1.9%	7.0%	6.1%	19.2%	16.0%	24.4%	13.1%	8.9%	
H21.4.23	堺	1.8%																	3.6%	1.8%	3.6%	9.1%	18.2%	23.6%	10.9%	12.7%	14.5%		
H21.4.23	浦添																			3.2%		9.7%	16.1%	16.1%	29.0%	25.8%			
H21.4.24	新潟																		2.6%	1.3%	7.8%	7.3%	12.5%	15.5%	16.4%	17.2%	15.1%	4.3%	
H21.4.24	甲府																			2.2%	4.4%	7.7%	7.7%	23.1%	19.8%	17.6%	9.9%	7.7%	
H21.4.24	静岡																				2.0%	4.5%	9.3%	13.0%	24.8%	24.8%	21.5%		
H21.4.24	福岡																				1.5%	4.5%	3.0%	12.1%	10.6%	15.2%	25.8%	27.3%	
	平均	0.12%								0.02%	0.04%	0.02%		0.0%	0.1%	0.7%	1.1%	1.5%	4.5%	6.4%	12.4%	16.2%	19.3%	20.6%	17.0%				