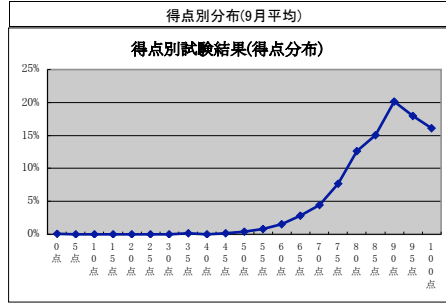
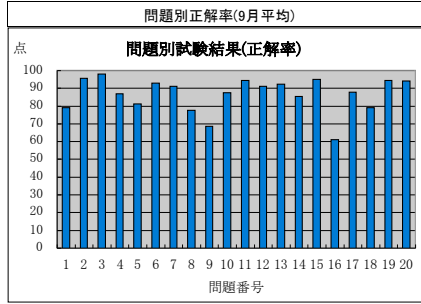


監理技術者講習の修了試験結果状況(平成21年9月分)



監理技術者講習の修了試験結果(問題別正解率)

実施日	地区	試験問題番号 (H20.09版)																				平均
		1	2	3	4	5	6	7	8	9	10	11	12	13	14	15	16	17	18	19	20	
H21.9.2	八戸	89	93	96	96	89	96	98	86	72	89	98	96	98	98	95	58	89	89	89	93	90.4
H21.9.2	さいたま	68	97	97	78	65	94	86	78	62	87	97	98	97	83	100	43	83	71	94	95	83.7
H21.9.2	千葉	78	96	100	89	89	89	97	73	69	77	94	88	84	77	93	46	88	76	97	94	84.7
H21.9.2	東京	81	98	99	95	88	93	80	77	70	81	94	85	95	74	98	62	82	83	96	92	86.2
H21.9.2	横浜	83	93	99	93	82	99	98	81	80	93	94	93	96	90	97	56	90	78	95	94	89.2
H21.9.2	松本	90	100	97	94	82	92	94	82	77	92	95	97	95	94	97	60	91	74	91	97	89.6
H21.9.3	名古屋	73	99	98	88	83	94	88	77	61	79	94	98	95	89	97	54	83	77	93	91	85.6
H21.9.3	大阪	83	98	95	95	100	95	95	80	88	95	98	100	98	98	98	70	98	88	98	98	93.4
H21.9.3	長崎	65	100	100	94	88	82	94	82	53	94	76	88	94	94	59	82	76	100	82	84.9	
H21.9.4	札幌	74	95	98	91	77	92	92	78	71	94	93	94	95	89	96	55	87	80	91	91	86.7
H21.9.4	さいたま	80	96	100	93	82	99	96	82	70	87	94	92	98	90	99	52	90	81	93	87	88.1
H21.9.4	甲府	72	97	99	87	79	91	96	85	64	75	89	85	92	75	93	47	89	83	92	96	84.3
H21.9.8	仙台	79	90	98	81	79	97	96	80	66	97	83	95	97	96	98	58	85	83	95	94	87.4
H21.9.8	東京	92	93	97	93	92	97	99	79	72	95	99	95	99	95	97	72	96	87	99	99	92.4
H21.9.8	小平	86	94	94	90	76	96	96	77	62	94	97	99	93	86	96	56	86	66	97	93	86.7
H21.9.8	新潟	61	91	94	79	84	90	86	79	56	80	88	87	96	69	91	36	79	70	91	85	79.6
H21.9.8	名古屋	78	97	98	89	75	80	96	78	61	73	91	86	96	85	90	44	81	72	88	91	82.5
H21.9.8	大阪	75	100	100	88	81	93	82	82	56	74	96	93	89	82	98	67	79	88	93	95	85.6
H21.9.8	広島	72	100	96	91	89	98	83	72	61	89	96	91	87	85	100	50	80	74	96	87	84.9
H21.9.8	福岡	81	95	95	94	84	95	90	85	73	90	95	89	97	82	98	63	92	79	97	97	88.6
H21.9.8	秋田	75	95	99	88	89	98	96	74	86	99	98	98	99	99	98	57	87	92	96	97	91.0
H21.9.9	いわき	68	98	94	79	72	92	91	74	66	92	79	92	96	79	92	64	96	81	100	92	84.9
H21.9.9	福井	63	96	95	88	83	96	82	75	54	93	94	87	91	74	98	53	83	69	98	92	83.2
H21.9.9	熊本	85	96	100	96	78	100	96	85	78	100	100	100	100	93	93	59	85	89	89	100	91.1
H21.9.10	神戸	77	90	95	85	77	95	97	74	74	85	95	95	95	92	90	67	97	95	85	97	87.9
H21.9.11	盛岡	72	82	98	88	88	95	94	67	68	83	96	96	96	92	95	52	91	88	91	91	86.7
H21.9.11	郡山	64	98	86	87	86	89	89	72	49	78	93	78	94	86	93	49	93	72	98	89	82.2
H21.9.11	水戸	79	96	97	81	74	92	95	66	56	94	95	85	92	88	93	44	84	79	91	91	83.6
H21.9.11	前橋	68	96	99	83	80	92	91	75	72	86	92	91	94	80	94	49	91	85	96	90	85.2
H21.9.11	東京	82	94	100	95	83	98	93	68	81	86	96	95	94	88	95	58	92	90	98	95	89.1
H21.9.11	横浜	81	94	98	89	78	96	95	82	74	95	95	96	90	93	97	65	86	84	97	95	89.0
H21.9.11	長野	79	94	97	80	87	93	93	73	68	97	92	95	97	87	98	61	87	82	94	94	87.4
H21.9.11	京都	84	100	100	87	77	94	90	77	71	77	87	90	97	77	84	48	81	87	90	94	84.6
H21.9.11	鹿児島	90	100	95	100	75	100	100	85	90	95	85	100	100	100	100	80	95	85	100	100	93.8
H21.9.14	東京	84	97	96	85	90	91	93	79	74	89	97	84	95	80	94	65	87	78	95	97	87.5
H21.9.15	旭川	81	93	98	92	87	92	93	74	74	93	98	91	91	90	95	76	98	98	99	96	90.5
H21.9.16	青森	74	93	94	85	82	87	90	71	57	85	93	89	91	87	94	45	88	75	90	96	83.3
H21.9.16	東京	75	93	96	85	79	94	89	81	61	86	92	87	86	81	95	51	91	82	93	94	83.6
H21.9.16	津	71	95	98	76	80	96	89	85	64	95	93	89	95	86	92	40	82	80	92	95	84.7
H21.9.16	堺	91	100	100	100	82	100	95	64	77	100	100	95	100	100	100	77	91	95	95	95	92.9
H21.9.16	北九州	81	100	100	89	94	97	89	78	86	89	94	92	100	94	94	69	86	86	100	97	90.8
H21.9.17	帯広	61	96	99	85	58	89	83	69	47	92	93	89	82	88	92	70	92	69	97	92	82.2
H21.9.17	柏	61	91	100	88	85	97	92	76	72	76	91	97	93	67	94	47	84	75	91	90	83.4
H21.9.17	市川	81	96	100	91	86	94	90	81	66	86	94	95	85	90	93	64	90	80	93	95	87.5
H21.9.17	金沢	87	97	97	89	87	94	96	75	68	93	88	88	81	82	94	55	90	85	97	96	87.0
H21.9.17	浦添	92	95	100	95	76	97	97	70	76	95	97	95	97	89	97	68	86	86	97	95	90.0
H21.9.18	仙台	80	96	98	88	86	94	97	77	61	93	96	98	96	95	97	64	88	71	96	95	88.3
H21.9.18	さいたま	93	93	100	90	93	95	98	85	83	85	98	83	95	83	98	88	98	78	98	95	91.5
H21.9.18	東京	88	96	96	78	80	91	96	79	72	92	96	91	99	84	98	75	98	95	99	99	90.1
H21.9.18	長岡	94	90	96	85	70	81	91	86	61	93	96	90	92	78	96	48	85	74	92	90	84.4
H21.9.18	三島	74	100	93	80	76	90	93	80	70	87	94	89	90	91	91	41	86	70	91	94	84.0
H21.9.18	名古屋	68	95	97	78	81	87	82	78	60	81	94	89	88	78	93	58	85	73	87	92	82.2
H21.9.18	大阪	74	95	100	81	82	95	89	75	77	79	91	88	96	89	98	86	95	93	98	95	88.8
H21.9.29	札幌	75	98	98	91	83	96	86	73	65	94	96	94	93	86	97	47	86	83	94	95	86.5
H21.9.29	東京	90	97	100	95	87	96	97	88	74	94	95	94	98	87	98	69	82	72	95	94	90.1
H21.9.30	さいたま	87	93	96	88	88	95	97	80	77	91	97	94	94	94	94	71	79	78	91	89	88.7
H21.9.30	千葉	64	97	96	83	71	82	86	73	52	87	92	89	86	72	88	48	79	62	89	89	79.3
H21.9.30	横浜	71	94	98	90	79	89	80	76	66	87	92	86	90	76	91	47	90	74	98	97	82.6
平均点		79.0	95.6	98.0	86.9	81.1	92.8	91.0	77.6	68.3	87.4	94.2	91.0	92.2	85.2	94.8	61.1	87.8	79.1	94.4	94.0	86.6

監理技術者講習の修了試験結果(得点別分布)

実施日	地区	得点(点)																							
		0点	5点	10点	15点	20点	25点	30点	35点	40点	45点	50点	55点	60点	65点	70点	75点	80点	85点	90点	95点	100点			
H21.9.2	八戸															1.8%	3.5%	8.8%	26.3%	8.8%	28.1%	22.8%			
H21.9.2	さいたま												1.6%	7.9%	3.2%	15.9%	15.9%	15.9%	17.5%	15.9%	6.3%				
H21.9.2	千葉									1.1%	2.1%	2.1%	3.2%	5.3%	11.6%	8.4%	16.8%	22.1%	18.9%	8.4%					
H21.9.2	東京											1.0%	1.0%	2.0%	5.1%	9.2%	16.3%	17.3%	18.4%	17.3%	12.2%				
H21.9.2	横浜											0.7%	1.4%	1.4%	4.8%	4.8%	6.8%	12.9%	22.4%	26.5%	18.4%				
H21.9.2	松本											1.3%	1.3%	2.6%	3.8%	6.4%	5.1%	7.7%	19.2%	30.8%	21.8%				
H21.9.3	名古屋											0.6%	1.9%	2.5%	5.6%	8.7%	11.2%	23.6%	21.1%	16.8%	8.1%				
H21.9.3	大阪											2.5%						20.0%	15.0%	25.0%	37.5%				
H21.9.3	長崎												5.9%	5.9%	5.9%	17.6%	5.9%		23.5%	17.6%	17.6%				
H21.9.4	札幌										2.3%	1.5%	1.5%	3.8%	6.1%	3.0%	6.8%	18.9%	18.2%	19.7%	18.2%				
H21.9.4	さいたま													3.6%	4.8%	4.8%	10.7%	10.7%	33.3%	19.0%	13.1%				
H21.9.4	甲府												4.0%	5.3%	5.3%	8.0%	12.0%	24.0%	22.7%	8.0%	10.7%				
H21.9.8	仙台												1.1%	2.8%	2.8%	7.9%	14.6%	15.2%	21.9%	18.5%	15.2%				
H21.9.8	東京											1.3%		2.6%	5.3%	2.6%	3.9%	18.4%	38.2%	27.6%					
H21.9.8	小平												1.4%	1.4%	2.8%		8.5%	12.7%	21.1%	25.4%	14.1%	12.7%			
H21.9.8	新潟										0.8%	1.6%	0.8%	3.2%	9.5%	9.5%	12.7%	15.9%	19.8%	13.5%	11.9%	0.8%			
H21.9.8	名古屋												2.1%	0.7%	4.3%	7.9%	10.0%	20.0%	25.7%	16.4%	10.7%	2.1%			
H21.9.8	大阪													5.3%	3.5%	10.5%	19.3%	19.3%	15.8%	10.5%	15.8%				
H21.9.8	広島														6.5%	10.9%	8.7%	10.9%	17.4%	19.6%	15.2%	10.9%			
H21.9.8	福岡													1.6%		3.2%	6.5%	11.3%	17.7%	22.6%	21.0%	16.1%			
H21.9.9	秋田	0.5%												0.9%	0.5%	1.4%	1.9%	4.7%	17.1%	20.4%	29.9%	22.7%			
H21.9.9	いわき													1.9%		1.8%	5.7%	11.3%	17.0%	17.0%	26.4%	7.5%	11.3%		
H21.9.9	福井													0.8%	2.4%	3.9%	10.2%	8.7%	18.9%	18.9%	14.2%	15.7%	6.3%		
H21.9.9	熊本											3.7%					7.4%	11.1%	3.7%	7.4%	33.3%	33.3%			
H21.9.10	神戸												2.6%	2.6%		2.6%	7.7%	12.8%	10.3%	20.5%	23.1%	17.9%			
H21.9.11	盛岡											0.8%	2.3%	1.6%		4.7%	9.3%	10.9%	14.0%	20.2%	20.9%	15.5%			
H21.9.11	郡山											1.2%	1.2%		4.8%	2.4%	9.6%	9.6%	15.7%	16.9%	22.9%	12.0%	3.6%		
H21.9.11	水戸											0.6%	1.8%	2.4%	4.8%	6.7%	7.9%	10.9%	21.8%	27.9%	8.5%	6.7%			
H21.9.11	前橋									0.7%					0.7%	2.8%	6.3%	12.7%	15.5%	12.0%	22.5%	18.3%	8.5%		
H21.9.11	東京												0.7%	1.4%	2.9%	2.2%	4.3%	10.1%	17.3%	15.1%	25.2%	20.9%			
H21.9.11	横浜		0.5%											1.0%	0.5%	2.0%	4.0%	4.0%	9.5%	13.1%	17.1%	24.6%	23.6%		
H21.9.11	長野										1.1%			1.1%	1.1%	3.2%	2.1%	6.3%	13.7%	11.6%	22.1%	23.2%	14.7%		
H21.9.11	京都													6.5%	3.2%	6.5%	9.7%	9.7%	16.1%	12.9%	32.3%	3.2%			
H21.9.11	鹿児島																5.0%			35.0%	30.0%	30.0%			
H21.9.14	東京													1.0%	2.1%	5.2%	5.2%	17.5%	15.5%	16.5%	23.7%	13.4%			
H21.9.15	旭川											0.8%	0.8%	0.8%	1.7%	1.7%	3.3%	9.1%	11.8%	14.9%	29.8%	25.8%			
H21.9.16	青森											0.7%		0.7%	1.5%	1.5%	4.4%	7.4%	11.8%	14.0%	19.1%	15.4%	5.9%		
H21.9.16	東京											1.2%	1.2%	1.2%	3.5%	2.4%	4.7%	10.6%	12.9%	20.0%	21.2%	12.9%	8.2%		
H21.9.16	津											0.7%		2.2%	2.9%	4.4%	9.6%	19.1%	20.6%	17.6%	14.0%	8.8%			
H21.9.16	堺																4.5%	13.6%			18.2%	27.3%	36.4%		
H21.9.16	北九州															2.8%		11.1%	11.1%	30.6%	25.0%	19.4%			
H21.9.17	帯広									1.0%				3.1%	2.0%	7.1%	3.1%	15.3%	16.3%	13.3%	22.4%	6.1%	10.2%		
H21.9.17	柏												1.7%		1.7%	1.7%	6.9%	14.7%	13.8%	19.8%	26.7%	6.0%	6.9%		
H21.9.17	市川										1.3%		1.3%	1.3%	2.5%	5.0%	5.0%	8.8%	10.0%	21.3%	20.0%	22.5%			
H21.9.17	金沢													1.4%		2.7%	4.1%	8.9%	12.3%	17.8%	21.2%	17.1%	14.4%		
H21.9.17	浦添														2.7%	2.7%	2.7%		2.7%	18.9%	24.3%	27.0%	18.9%		
H21.9.18	仙台													0.7%	3.0%	1.5%	2.2%	6.7%	10.4%	14.8%	18.5%	23.0%	19.3%		
H21.9.18	さいたま															2.4%		4.9%	4.9%	14.6%	22.0%	24.4%	26.8%		
H21.9.18	東京	1.0%														1.0%	1.0%	4.8%	7.6%	13.3%	22.9%	23.8%	24.8%		
H21.9.18	長岡												0.7%	1.4%	3.6%	11.4%	3.6%	12.1%	24.3%	24.3%	14.3%	4.3%			
H21.9.18	三島												1.4%		7.1%		4.3%	11.4%	18.6%	17.1%	12.9%	12.9%	14.3%		
H21.9.18	名古屋	0.6%									0.6%		1.7%	2.2%	1.1%	3.4%	5.0%	15.1%	14.0%	21.2%	16.2%	10.6%	8.4%		
H21.9.18	大阪														3.5%	7.0%			12.3%	12.3%	26.3%	17.5%	21.1%		
H21.9.29	札幌												0.7%	1.4%	2.2%	1.4%	7.2%	7.9%	15.1%	12.9%	11.5%	18.7%	20.9%		
H21.9.29	東京														2.1%	2.1%	5.0%	9.2%	16.3%	17.7%	25.5%	22.0%			
H21.9.30	さいたま	0.6%												0.6%	1.3%	2.5%	3.2%	5.7%	8.2%	12.0%	21.5%	22.2%	22.2%		
H21.9.30	千葉											0.8%	0.8%	0.8%	2.3%	2.3%	9.0%	12.8%	12.8%	20.3%	9.0%	11.3%	13.5%	4.5%	
H21.9.30	横浜													0.5%	1.5%	0.5%	4.9%	6.4%	15.3%	21.2%	16.7%	13.8%	14.8%	4.4%	
	平均	0.10%										0.13%	0.0%	0.2%	0.4%	0.8%	1.5%	2.8%	4.5%	7.7%	12.6%	15.1%	20.1%	17.9%	16.1%