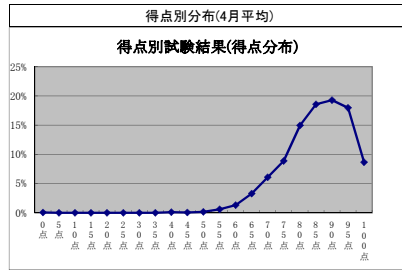
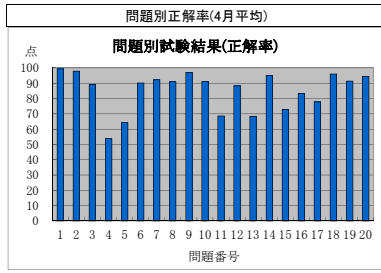


監理技術者講習の修了試験結果状況(平成28年4月分)



監理技術者講習の修了試験結果(問題別正解率)

実施日	地区	試験問題番号																				平均
		1	2	3	4	5	6	7	8	9	10	11	12	13	14	15	16	17	18	19	20	
H28.4.1	いわき	97	94	37	51	46	89	97	91	91	91	80	77	83	91	86	74	80	97	80	91	81.2
H28.4.1	市川	100	98	23	48	58	87	94	90	98	92	92	81	90	97	62	72	70	96	89	95	81.6
H28.4.1	東京	99	95	22	55	51	89	91	94	96	93	80	65	79	95	63	85	66	97	92	92	80.0
H28.4.1	名古屋	98	95	39	71	74	87	99	88	100	92	94	81	93	94	79	81	80	98	93	95	86.8
H28.4.4	小平	98	97	21	70	64	94	95	86	100	91	98	76	91	98	71	86	89	97	95	100	85.9
H28.4.5	札幌	100	99	92	55	63	96	97	90	98	95	61	93	86	93	68	81	79	95	91	91	86.2
H28.4.5	横浜	100	98	95	51	57	94	90	90	95	94	53	92	71	89	81	85	85	97	92	98	85.4
H28.4.5	新潟	100	99	81	46	70	92	95	93	99	91	67	94	80	96	76	82	77	98	95	90	85.1
H28.4.5	長野	98	98	93	68	74	95	98	87	98	95	70	92	72	98	80	83	80	98	93	98	86.4
H28.4.5	神戸	100	100	93	57	51	92	96	87	99	93	77	89	79	92	74	86	80	96	93	95	88.5
H28.4.5	岡山	100	98	89	47	79	90	97	99	94	89	69	90	56	92	76	80	61	95	89	91	84.1
H28.4.5	高松	98	100	97	57	73	95	100	90	100	90	83	98	89	94	71	87	84	94	97	87	89.2
H28.4.6	青森	99	98	91	42	67	92	95	89	98	90	70	92	70	91	52	87	65	92	87	88	82.8
H28.4.6	東京	99	99	89	54	65	84	87	93	98	86	80	84	65	99	83	85	82	96	89	97	85.7
H28.4.6	大阪	100	99	95	59	72	97	97	93	98	97	82	97	76	97	84	95	87	99	95	99	90.9
H28.4.7	帯広	100	96	89	60	71	91	91	92	93	81	64	89	47	97	72	87	88	98	94	96	84.8
H28.4.7	浜松	100	98	90	52	66	93	95	93	97	95	79	93	69	97	90	81	84	100	90	95	87.9
H28.4.7	長崎	98	98	91	39	61	79	95	88	89	56	77	86	93	61	88	68	96	93	88	82.1	
H28.4.8	仙台	99	99	92	61	68	88	99	88	97	94	67	93	69	99	75	92	67	95	88	93	86.2
H28.4.8	水戸	99	98	88	62	59	91	95	86	97	96	58	84	55	90	66	80	81	94	97	93	83.5
H28.4.8	千葉	99	100	92	50	70	87	82	92	99	91	53	84	59	96	79	86	79	96	96	99	84.5
H28.4.8	東京	99	99	95	62	62	91	93	93	98	92	77	93	71	99	84	91	75	100	92	97	88.2
H28.4.8	横浜	100	100	87	40	71	84	87	98	96	92	67	82	53	98	61	89	86	97	93	98	84.0
H28.4.8	金沢	100	97	91	41	74	97	92	92	97	86	72	94	75	96	77	85	90	96	92	95	87.0
H28.4.8	松本	100	98	92	64	65	76	92	89	94	89	54	75	67	92	74	81	70	96	96	96	83.0
H28.4.8	名古屋	100	98	93	57	59	91	92	91	98	88	76	84	69	96	72	89	83	95	93	95	86.0
H28.4.8	熊本	97	97	90	46	70	83	87	86	89	73	59	72	56	96	63	90	58	93	90	94	79.5
H28.4.12	宇都宮	99	92	75	57	60	81	92	96	96	84	66	84	52	93	70	81	80	95	93	93	82.0
H28.4.12	さいたま	99	99	98	60	63	91	95	87	100	91	82	92	68	95	81	84	86	96	95	94	87.0
H28.4.12	東京	99	97	91	56	72	86	87	91	98	90	67	82	61	90	63	82	67	95	89	89	82.6
H28.4.12	北九州	94	97	91	52	67	92	100	96	96	99	83	96	64	96	77	78	75	96	94	98	87.1
H28.4.13	旭川	99	98	89	54	67	90	94	83	97	93	73	94	83	97	82	91	79	95	93	95	87.3
H28.4.13	秋田	99	99	94	65	68	95	94	90	94	94	72	94	78	93	77	87	72	97	93	90	87.3
H28.4.13	富山	100	98	88	52	72	85	91	98	98	89	57	95	68	96	82	92	78	96	92	95	86.1
H28.4.13	名古屋	100	100	93	63	66	94	96	92	100	92	70	91	75	96	72	88	80	99	95	96	87.9
H28.4.13	津	100	100	90	63	59	86	96	96	97	89	69	73	52	94	63	80	70	94	89	93	82.7
H28.4.14	前橋	99	96	89	61	67	90	91	93	97	89	63	78	63	94	74	78	76	97	86	93	83.7
H28.4.14	相模原	100	99	98	40	76	95	93	91	100	91	70	99	61	99	90	90	87	100	95	98	88.6
H28.4.14	静岡	99	100	97	58	69	93	94	90	99	92	74	91	74	96	74	88	81	98	95	99	88.1
H28.4.14	広島	100	97	89	47	66	89	90	97	95	92	70	89	53	92	64	89	60	97	93	93	83.1
H28.4.15	仙台	99	98	93	53	63	94	93	91	98	95	71	95	86	97	71	92	73	95	90	96	87.2
H28.4.15	郡山	99	99	77	45	67	87	94	93	97	92	54	87	55	97	74	86	71	98	90	95	82.9
H28.4.15	千葉	100	97	84	44	71	85	78	93	91	90	61	76	64	93	61	85	71	97	90	92	81.2
H28.4.15	東京	99	98	84	55	63	90	96	96	100	94	75	82	74	97	72	81	89	96	94	99	86.7
H28.4.15	名古屋	100	99	88	73	66	90	96	93	100	93	63	93	74	93	73	92	83	99	91	95	87.7
H28.4.15	大阪	99	99	97	54	66	94	95	93	99	95	80	95	71	98	87	90	90	97	95	98	89.6
H28.4.19	札幌	100	98	94	64	73	96	98	92	98	94	70	94	80	97	74	88	93	96	94	89	89.1
H28.4.19	岐阜	99	98	82	55	58	86	94	92	98	90	77	83	65	97	69	88	74	98	87	96	84.3
H28.4.20	東京	100	98	84	52	59	82	93	95	98	93	59	76	57	93	64	79	63	98	94	97	81.7
H28.4.20	横浜	99	99	94	39	70	92	95	94	100	96	74	95	68	96	73	87	82	97	95	98	87.2
H28.4.20	大津	98	100	92	52	69	90	94	96	100	83	63	83	54	90	69	73	65	94	90	88	82.2
H28.4.21	柏	100	98	83	40	65	95	95	85	97	88	68	93	58	97	75	92	72	95	92	91	84.0
H28.4.21	松江	100	98	96	62	62	84	93	91	100	100	76	93	76	98	80	91	89	98	96	98	89.1
H28.4.21	松山	100	100	100	71	68	100	97	84	100	94	71	97	97	100	68	97	87	100	94	97	91.1
H28.4.21	大分	100	100	78	36	50	78	92	94	97	92	53	83	69	100	83	83	81	94	83	100	82.3
H28.4.22	札幌	100	99	90	54	59	87	91	86	97	88	58	80	51	96	69	78	81	95	89	98	82.3
H28.4.22	仙台	99	99	92	53	66	93	96	87	97	95	67	86	71	93	63	90	73	96	96	96	85.4
H28.4.22	東京	99	99	88	48	65	83	91	94	97	93	78	89	63	99	70	83	77	99	91	95	85.1
H28.4.22	福井	100	100	90	88	86	97	98	98	89	83	82	91	92	93	80	84	85	92	93	95	90.8
H28.4.22	名古屋	99	99	96	67	66	94	95	91	100	88	78	85	61	99	77	85	87	95	95	98	87.8
H28.4.22	大阪	100	99	95	56	65	95	93	92	99	91	67	90	66	94	68	86	84	97	92	95	86.2
H28.4.26	盛岡	99	99	89	50	69	93	95	88	98	90	74	94	63	88	72	84	80	97	90	94	85.3
H28.4.26	さいたま	99	97	86	55	65	90	92	87	97	92	77	84	63	95	86	80	85	96	90	95	85.6
H28.4.26	小平	97																				

## 監理技術者講習の修了試験結果(得点別分布)

実施日	地区	得点(点)																								
		0点	5点	10点	15点	20点	25点	30点	35点	40点	45点	50点	55点	60点	65点	70点	75点	80点	85点	90点	95点	100点				
H28.4.1	いわき													2.9%	2.9%	5.7%	2.9%	20.0%	17.1%	17.1%	14.3%	17.1%				
H28.4.1	市川													1.1%	1.1%	5.4%	10.8%	9.7%	22.6%	21.5%	18.3%	7.5%	2.2%			
H28.4.1	東京												1.0%	1.0%	2.1%	5.2%	4.2%	9.4%	16.7%	14.6%	15.6%	19.8%	8.3%	2.1%		
H28.4.1	名古屋															1.2%	3.6%	2.4%	4.8%	20.2%	20.2%	21.4%	13.1%	13.1%		
H28.4.4	小平													1.5%	1.5%	3.0%	4.5%	9.1%	12.1%	12.1%	27.3%	21.2%	7.6%			
H28.4.5	札幌															0.7%		2.1%	5.0%	9.9%	14.9%	18.4%	19.9%	9.9%		
H28.4.5	横浜															3.2%	4.8%	2.4%	5.6%	16.1%	19.4%	23.4%	20.2%	4.8%		
H28.4.5	新潟													0.9%	0.9%	0.9%	3.5%	4.4%	8.8%	18.4%	14.0%	24.6%	15.8%	7.9%		
H28.4.5	長野													0.8%	0.8%	0.8%	5.0%	7.4%	9.1%	18.2%	14.0%	25.6%	18.2%			
H28.4.5	神戸													1.1%	1.1%	2.2%	3.3%	8.7%	17.4%	17.4%	17.4%	16.3%	15.2%			
H28.4.5	岡山													1.1%		1.1%	8.0%	16.1%	13.8%	23.0%	18.4%	11.5%	6.9%			
H28.4.5	高松															3.2%	6.3%	1.6%	12.7%	7.9%	23.8%	23.8%	20.6%			
H28.4.6	青森													0.9%	0.9%	1.8%	4.5%	7.3%	17.3%	11.8%	15.5%	20.9%	15.5%	3.6%		
H28.4.6	東京													1.1%	1.1%	4.3%	4.3%	5.4%	15.2%	20.7%	21.7%	18.5%	7.6%			
H28.4.6	大阪															1.3%	2.6%	4.0%	4.6%	15.2%	22.5%	28.5%	21.2%			
H28.4.7	帯広													1.1%	1.1%	1.1%	5.6%	9.0%	1.1%	13.5%	21.3%	22.5%	14.6%	9.0%		
H28.4.7	浜松													1.7%				6.9%	3.4%	13.8%	19.0%	13.8%	27.6%	13.8%		
H28.4.7	長崎													1.8%	1.8%	1.8%	10.5%	10.5%	21.1%	28.1%	8.8%	12.3%	3.5%			
H28.4.8	仙台													1.4%	0.7%	3.4%	4.8%	5.4%	14.3%	21.8%	18.4%	18.4%	11.6%			
H28.4.8	水戸													1.5%	1.5%	3.8%	3.8%	11.5%	20.0%	23.8%	18.5%	8.5%	6.9%			
H28.4.8	千葉															2.6%	3.9%	6.6%	7.9%	15.8%	22.4%	19.7%	15.8%	5.3%		
H28.4.8	東京													1.0%	2.0%	1.0%	3.9%	6.9%	8.8%	13.7%	20.6%	28.4%	13.7%			
H28.4.8	横浜															1.1%	3.9%	5.0%	8.9%	21.8%	25.1%	21.2%	6.7%	6.1%		
H28.4.8	金沢															3.4%	0.9%	6.8%	17.1%	17.9%	24.8%	23.9%	5.1%			
H28.4.8	松本													2.4%	2.4%	7.1%	7.1%	10.7%	9.5%	21.4%	20.2%	9.5%	9.5%			
H28.4.8	名古屋													0.8%	0.8%	0.8%	7.8%	7.0%	14.8%	21.1%	21.1%	16.4%	9.4%			
H28.4.8	熊本													1.4%	9.9%	15.5%	19.7%	11.3%	18.3%	14.1%	8.5%	1.4%				
H28.4.12	宇都宮													2.5%	2.5%	6.6%	11.9%	13.9%	12.3%	11.5%	18.0%	15.6%	5.7%			
H28.4.12	さいたま													0.6%		1.8%	5.3%	8.2%	11.1%	18.1%	16.4%	21.6%	17.0%			
H28.4.12	東京													0.7%	1.4%	0.7%	6.8%	4.8%	12.2%	20.4%	23.8%	10.2%	14.3%	4.8%		
H28.4.12	北九州															1.0%	3.0%	6.0%	7.0%	12.0%	18.0%	16.0%	25.0%	12.0%		
H28.4.13	旭川													0.9%		1.8%	0.9%	1.8%	10.1%	10.1%	15.6%	26.6%	16.5%	15.6%		
H28.4.13	秋田															0.9%	0.9%	6.5%	7.4%	12.0%	17.6%	24.1%	16.7%	13.9%		
H28.4.13	富山															0.8%	3.9%	3.9%	10.1%	10.1%	20.2%	27.1%	16.3%	7.8%		
H28.4.13	名古屋															1.4%	2.2%	3.6%	5.8%	8.0%	23.2%	19.6%	21.7%	14.5%		
H28.4.13	津													1.1%		4.3%	7.4%	10.6%	16.0%	19.1%	22.3%	12.8%	3.2%			
H28.4.14	前橋															0.5%	1.5%	4.5%	8.5%	11.1%	15.6%	17.1%	19.1%	17.6%	4.5%	
H28.4.14	相模原															1.1%	1.1%	5.7%	11.5%	21.8%	25.3%	23.0%	10.3%			
H28.4.14	静岡													0.8%		2.3%	1.6%	2.3%	3.9%	11.6%	18.6%	23.3%	19.4%	16.3%		
H28.4.14	広島													1.7%		1.7%	3.5%	6.1%	15.7%	13.0%	16.5%	24.3%	16.5%	0.9%		
H28.4.15	仙台													0.8%	0.8%	4.6%	1.5%	5.4%	13.1%	20.8%	21.5%	18.5%	13.1%			
H28.4.15	郡山													0.7%		2.1%	2.8%	6.3%	11.9%	21.0%	26.6%	14.7%	11.2%	2.8%		
H28.4.15	千葉													4.5%	4.5%	9.0%	4.5%	10.1%	14.6%	20.2%	15.7%	10.1%	6.7%			
H28.4.15	東京													3.9%	2.9%	9.7%	16.5%	13.6%	22.3%	20.4%	10.7%					
H28.4.15	名古屋															1.9%	5.6%	6.5%	15.0%	13.1%	23.4%	20.6%	14.0%			
H28.4.15	大阪													0.7%		2.0%	2.7%	6.8%	10.2%	10.2%	19.7%	25.9%	21.8%			
H28.4.19	札幌															3.3%	2.5%	6.6%	7.4%	17.4%	23.1%	19.8%	19.8%			
H28.4.19	岐阜															1.9%	3.7%	8.4%	6.5%	15.9%	20.6%	25.2%	13.1%	4.7%		
H28.4.20	東京													2.9%		4.8%	11.5%	13.5%	16.3%	19.2%	21.2%	4.8%	5.8%			
H28.4.20	横浜													0.5%		1.8%	2.7%	8.1%	15.8%	18.0%	22.5%	17.1%	13.1%			
H28.4.20	大津													2.1%	2.1%	2.1%	6.3%	8.3%	10.4%	16.7%	10.4%	22.9%	12.5%	6.3%		
H28.4.21	柏													0.8%		1.7%	3.4%	6.8%	6.8%	25.4%	17.8%	16.1%	11.9%	9.3%		
H28.4.21	松江																	4.4%	6.7%	8.9%	13.3%	31.1%	22.2%	13.3%		
H28.4.21	松山																	3.2%	9.7%	12.9%	29.0%	29.0%	16.1%			
H28.4.21	大分															2.8%	11.1%		5.6%	25.0%	22.2%	25.0%	8.3%			
H28.4.22	札幌															1.9%	3.8%	17.0%	10.4%	10.4%	25.5%	15.1%	10.4%	5.7%		
H28.4.22	仙台													0.7%		1.5%	3.7%	3.0%	12.6%	14.1%	16.3%	20.0%	20.0%	8.1%		
H28.4.22	東京															0.7%	2.6%	6.6%	9.3%	21.9%	14.6%	17.9%	21.2%	5.3%		
H28.4.22	福井															1.1%		2.2%	9.8%	5.4%	8.7%	19.6%	26.1%	27.2%		
H28.4.22	名古屋															0.8%	0.8%	3.8%	4.6%	17.7%	17.7%	21.5%	20.0%	13.1%		
H28.4.22	大阪													0.7%		1.4%	2.7%	4.1%	10.1%	12.8%	17.6%	23.0%	18.2%	9.5%		
H28.4.26	盛岡													0.7%		2.1%	0.7%	4.2%	4.9%	6.9%	13.2%	22.9%	16.7%	15.3%	12.5%	
H28.4.26	さいたま															1.7%	1.1%	1.7%	6.2%	5.6%	16.9%	20.3%	19.8%	18.6%	7.9%	
H28.4.26	小平	1.4%												1.4%		4.2%	8.5%	16.9%	19.7%	23.9%	16.9%	16.9%	7.0%			
H28.4.26	横浜													0.5%	0.5%	1.6%	4.3%	7.1%	8.2%	14.7%	25.5%	16.8%	15.8%	4.9%		
H28.4.26	福岡													0.5%	2.1%	1.6%	4.8%	7.4%	12.2%	17.5%	20.6%	22.2%	11.1%			
H28.4.26	鹿児島															1.4%	7.0%	8.5%	5.6%	19.7%	14.1%	15.5%	21.1%	7.0%		
H28.4.27	水戸													0.6%	0.6%	2.6%	5.1%	4.5%	10.3%	13.5%	19.9%	9.6%	9.6%	3.8%		
H28.4.27	東京													0.7%	0.7%	3.9%	9.8%	17.0%	8.5%	21.6%	22.2%	10.5%	4.6%			
H28.4.28	札幌															2.3%	1.2%	3.5%	15.1%	18.6%	23.3%	20.9%	15.1%			
H28.4.28	仙台															1.8%	0.9%	2.7%	13.4%	12.5%	15.2%	19.6%	15.2%	6.3%		
H28.4.28	千葉													0.9%	0.9%	2.7%	4.4%	6.2%	14.2%	21.2%	17.7%	13.3%	13.3%	5.3%		
H28.4.28	名古屋															0.9%	1.9%	0.9%	0.9%	5.6%	8.4%	21.5%	12.1%	35.5%	12.1%	
H28.4.28	大阪															1.3%	4.6%	7.2%	9.2%	15.6%	17.1%	23.7%	13.2%	7.9%		
H28.4.28	奈良															2.3%	6.8%	6.8%	11.4%	15.9%	25.0%	25.0%	6.8%			
	平均	0.07%												0.1%	0.1%	0.2%	0.6%	1.3%	3.3%	6.1%	8.9%	14.9%	18.6%	19.3%	18.0%	8.6%