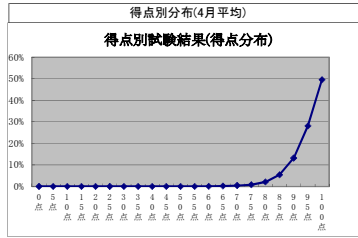
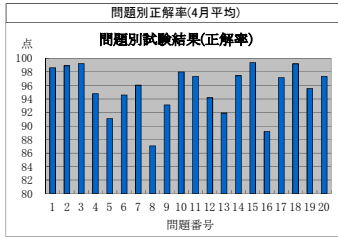


監理技術者講習の修了試験結果状況(平成31年4月分)



監理技術者講習の修了試験結果(問題別正解率)

Table with 22 columns: 実施日 (Implementation Date), 地区 (Region), 試験問題番号 (Exam Question Number) 1-20, and 平均 (Average). Rows list various municipalities and their corresponding scores for each question, ending with an average score row at the bottom.

